

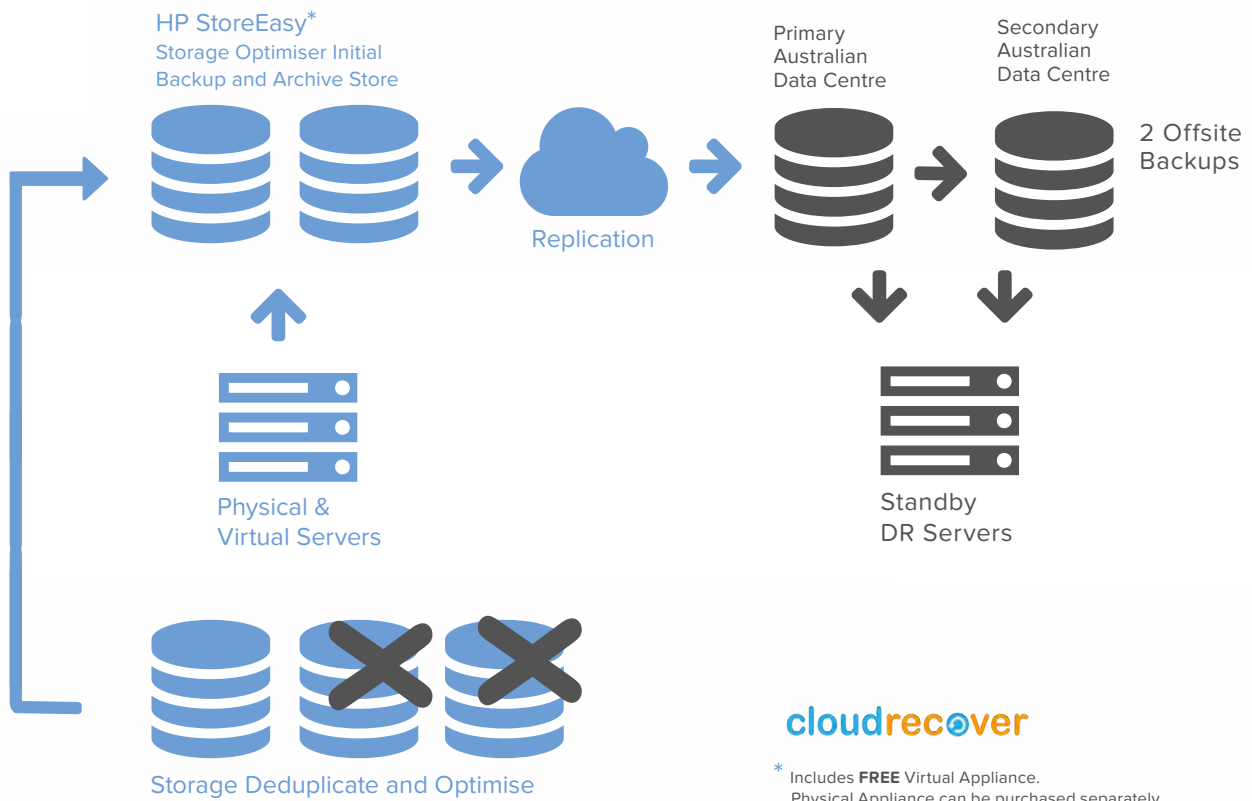
Storage Optimisation Service

Powered by



**Hewlett Packard
Enterprise**

cloudrecovery



* Includes **FREE** Virtual Appliance.
Physical Appliance can be purchased separately.

Cloud Archiving, Backup & DR in One Solution



Solution Overview

Our new Storage Optimisation Service is an innovative offering that combines file analytics with archiving, backup and disaster recovery capabilities to help you manage your data more intelligently, while slashing cost and complexity.

Simply adding disks and infrastructure to accommodate data growth are not sustainable in the long run.

IT needs to consider smarter solutions that make it possible to reign in data storage costs, reduce the footprint of storage systems, simplify and reduce backup, and manage data storage infrastructure.

CIOs, IT professionals and infrastructure and storage executives can address these specific issues with CloudRecover's Storage Optimisation Service.

Our service allows you to quickly analyze files to optimize and reduce the total amount of storage required for file based data, across different repositories, across multiple data storage tiers, and across the whole organisation.

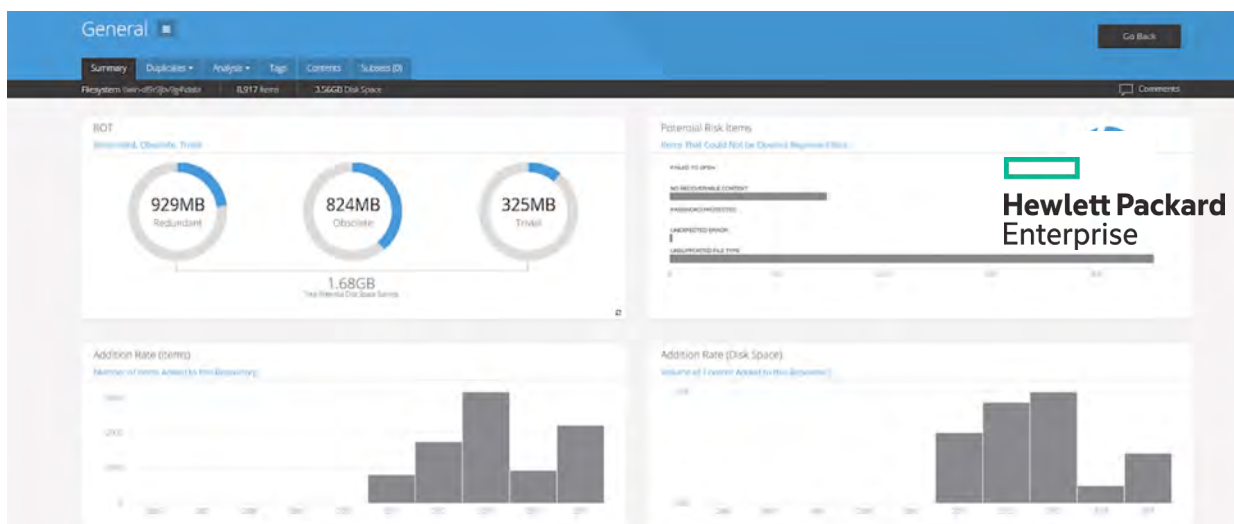
For example, you can:

- Use analytics-driven insight to improve data quality and intelligence
- Connect to many different repositories and extract information from a variety of data sources, including Hadoop, SharePoint, Exchange, and HP StoreAll
- Identify redundant, obsolete, and trivial data
- Archive selected documents and leave a stub in place for easy access
- Apply complex policies to optimise storage consumption
- Deduplicate data across different repositories and different storage tiers

Optimise storage with high levels of transparency and intelligence by leveraging HPE Storage Optimizer's visual interface highlighting the analysis that identifies where smart reductions can be made.

Benefits

- Shine a light on dark data that is sitting unmanaged in email repositories, file shares, and SharePoint sites to save significant storage costs and gain better access to valuable information
- Minimise the cost and risk of declaring records to be managed in a records management system for long-term governance
- Analyse vast amounts of enterprise data and intelligently migrate targeted information to Cloud-based repositories for improved security, user access and lower overall storage costs



Tier III Australian Global Switch & Standby Data Centres



Operating System Layer

CloudRecover utilises Windows Server 2012 R2 to provide highly available replicated operating systems. Utilising VLAN isolation and full continuous replication, an outage of any data centre causes minimal client disruption.

Antivirus

A strong partnership with Trend Micro ensures all operating systems and network ingress points are protected by anti-virus. Central control ensures hourly update of virus patterns and immediate action on any outbreak.

Connectivity

- Carrier Neutral
- Access to multiple telecommunications providers
- 2 diverse building entry points
- Diverse cable routes and pathways

Security

- Security guard patrols 24x7x365
- Premises under constant CCTV surveillance both exterior and interior common parts
- Intruder alarms to all areas
- Physical access to the data centre is controlled by mantrap
- Strict access control procedures
- Access control using proximity card readers and biometric systems
- Certified for ISO 9001, 14001, 27001

Firewalls

Mirrored high availability, high throughput firewalls are provided at both the production and Failover Data Centre. They are monitored continuously and provide Intrusion Detection and a number of other alert functions.

Network

Redundant Tier 1 carriers into each data centre ensures continuous network operations and 100% availability over the last three years. Global Switch is represented by all the major carriers for ease of cross connection to customer WANs. A dual path dark fibre provides high speed MAN access to the Failover Data Centre.

Monitoring

Our 24x7 monitoring system checks firewalls, disk space, network, CPU and memory usage, as well as application availability. Alerts are immediately posted via email and SMS to the on call team.

Servers & Storage

CloudRecover's rock solid HPE blade infrastructure is configured as per HPE's recommended technical specifications. Our Cloud Servers are powered by Microsoft Hyper-V to provide the reliability and on-demand scalability you need, while eliminating your concerns about availability. There are always two duplicate blade systems configured and capable of taking over from each other. Redundant fans, power supplies, memory and NIC's form part of the blade system. All physical server operating systems are configured on RAID 1 with redundant SAS paths to the main storage.

Storage is provided on duplicate HP SANs configured in different RAID sets depending on its function.

Global Switch Data Centre

Our Primary Sydney data centre is located in Ultimo, and is one of the largest data centres in the Southern Hemisphere, with over 40MW on site power generation capacity. Strategically positioned on the western edge of the Sydney Central Business District (CBD), our world class data centre provides highly resilient and scalable technical space and power solutions within a low latency environment.

Key features of our data centre include:

- 41,500 sq m with 40 MW utility power supply to the data centre
- Serviced by multiple telecommunication exchanges and a dense carrier presence providing exceptional connectivity
- Conveniently situated on the edge of the CBD but not on the same electricity supply

Standby Data Centre

Pipe Networks Cable Landing Station Cromer (CRO) is where the PPC-1 internet fibre optic cable enters Australia from the United States. It is 40 kilometers from Global Switch and provides a secure fully replicated copy of the production environment.

cloudrecover

CloudRecover

Suite 102, 283 Alfred St, North Sydney NSW

Phone: 02 8188 0200

sales@cloudrecover.com.au